



Waimea Roadway Improvements Project

Community Meeting

July 27, 2023

4:30 pm to 6:30 pm

Introductions

- Hawai'i Department of Transportation

- Ken Tatsuguchi, Head Highways Planning Engineer
- Brian Tyau, Project Manager
- Harry Takiue, Hawai'i District Engineer

- SSFM International, Inc.

- Austen Drake, Hawai'i Office Manager
- Jennifer Scheffel, Project Manager
- Cheryl Soon, Project Principle
- Jo-Anna Herkes, Outreach Coordinator
- Mike Packard, Traffic Engineer
- Heather Bartlett, Planner



Tonight's Agenda

- Purpose of this meeting
- Project Background
- Multimodal Improvements Presented in the Draft Environmental Assessment
- Minimization and Mitigation Measures to Reduce Impacts to Lanakila Park
- Next Steps
- Discussion and Questions

Purpose of this Meeting



- Discuss the on-going consultation with the State Historic Preservation Division
- Discuss impacts to Lanakila Park
- Discuss proposed Minimization and Mitigation Measures to reduce impacts to Lanakila Park
- Obtain Community Input regarding the proposed Minimization and Mitigation Measures

Project Background



Proposed Action Presented in the Draft Environmental Assessment



Bicycle and pedestrian treatments along Māmalahoa Highway between Waimea School and Pukalani Road



Intersection improvements at Māmalahoa Highway and Lindsey Road



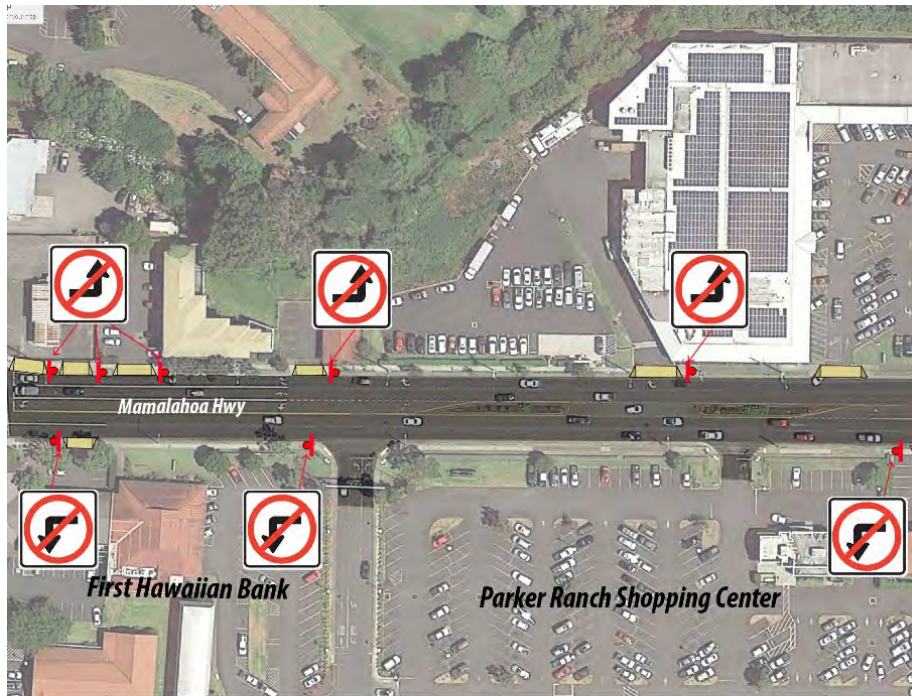
Installation of a roundabout at the Kawaihae Road and Lindsey Road intersection



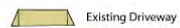
Roadway improvements along Kawaihae Road between Lindsey Road and Opelo Road, including bicycle and pedestrian treatments along both sides of the Kawaihae Road to Opelo Road

Māmalahoa Highway Multimodal Improvements

(Pukalani Road to Lindsey
Road)



gend:

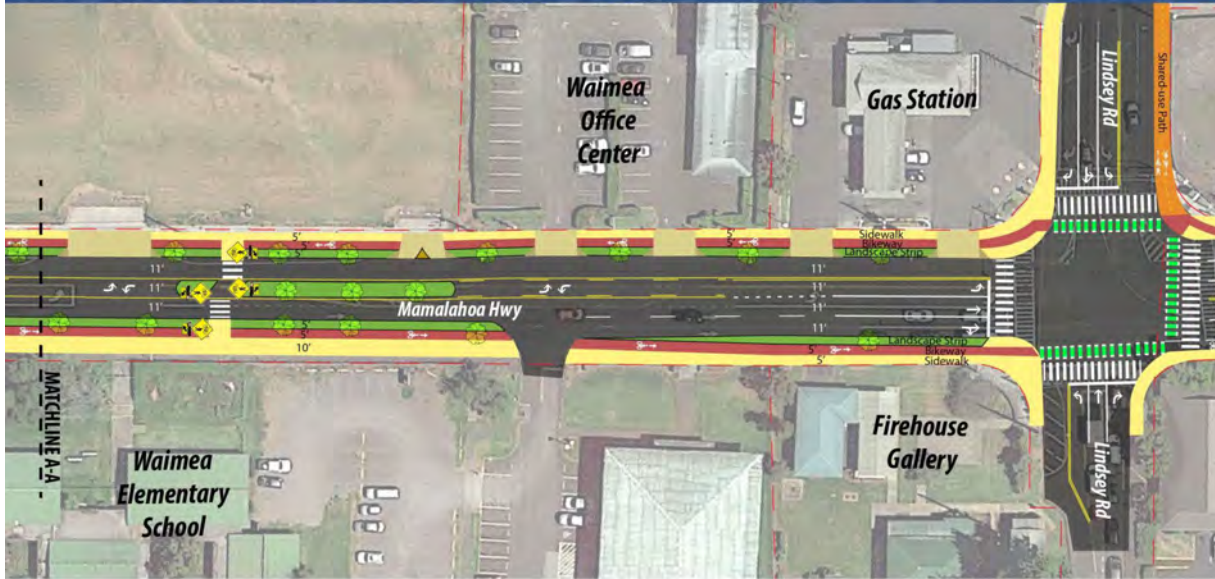


Existing Driveway



No Left Turn Sign

MAMALAHOA HWY: LINDSEY ROAD to KAOMOLOA ROAD



Legend:

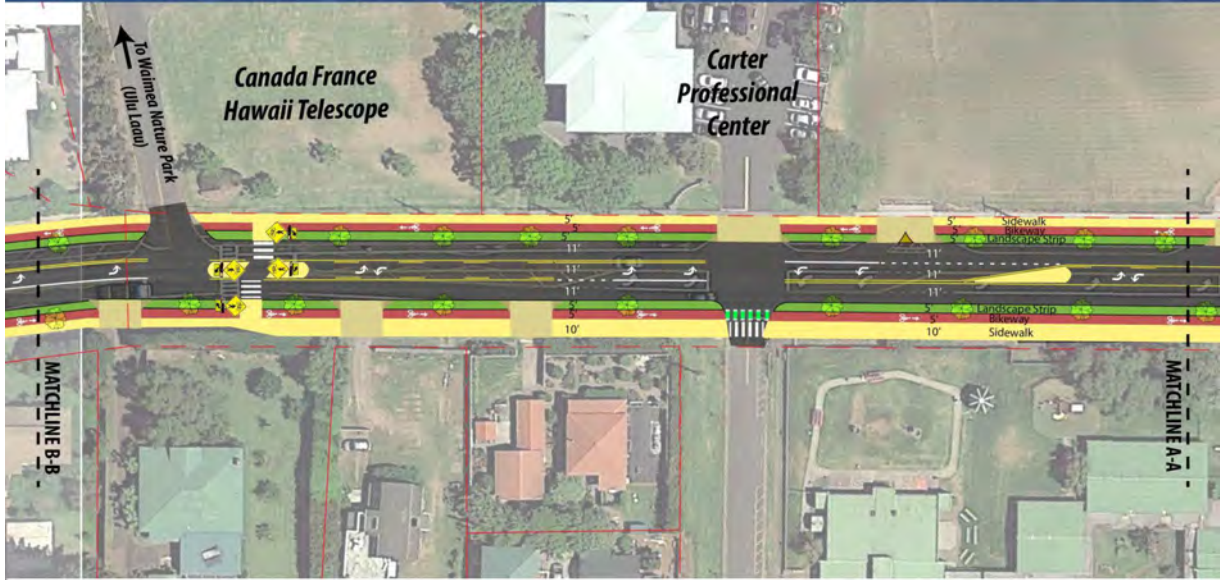
Right of Way (approximate)	Landscape Strip (Green) Bikeway (Red) Sidewalk (Yellow) Travelway (Grey)	Pedestrian Crossing	Driveway	Raised landscape Island
RRFB Signs	Right-in/Right-out Driveway			

0 30 60 ft
November 24, 2020

Māmalahoa Highway Multimodal Improvements

(Lindsey Road to Waimea
Elementary School)

MAMALAHOA HWY: LINDSEY ROAD to KAOMOLOA ROAD



Legend:

- Right of Way (approximate)
- Landscape Strip (Green)
- Bikeway (Red)
- Sidewalk (Yellow)
- Travelway (Grey)
- RRFB Signs
- Pedestrian Crossing
- Driveway
- Right-in/Right-out Driveway
- Raised Median Island



Māmalahoa Highway Multimodal Improvements

(Waimea Elementary School to
Canada-France-Hawai'i
Telescope)

MAMALAHOA HWY: LINDSEY ROAD to KAOMOLOA ROAD



Legend:

- - - Right of Way (approximate)
- Landscape Strip (Green)
- Bikeway (Red)
- Sidewalk (Yellow)
- Travelway (Grey)
- Pedestrian Crossing
- Driveway
- Raised Median Island
- RRFB Signs



Māmalahoa Highway Multimodal Improvements

(Canada-France-Hawai'i
Telescope to Koamoloa Road)

WAIMEA REGIONAL SAFETY STUDY: KAWAIHAE ROAD AND LINDSEY ROAD



Legend:

- Right of Way (approximate)
- Sidewalk (Yellow)
- Bikeway (Red)
- Landscape strip (green) with street tree
- Travelway (Grey)
- Shared-Use path (Orange)
- Pedestrian Crossing
- Driveway

Kawaihae Road and Lindsey Road Multimodal Improvements

WAIMEA REGIONAL SAFETY STUDY: KAWAIHAE ROAD AT OPELO ROAD



DISCLAIMER: THIS GRAPHIC WAS PREPARED FOR PLANNING DISCUSSION PURPOSES ONLY

Legend:



Kawaihae Road Multimodal Improvements

(Opelo Road Sample Cross-Section, Implemented from Opelo Road to Lindsey Road)

State Historic Preservation Division Consultation



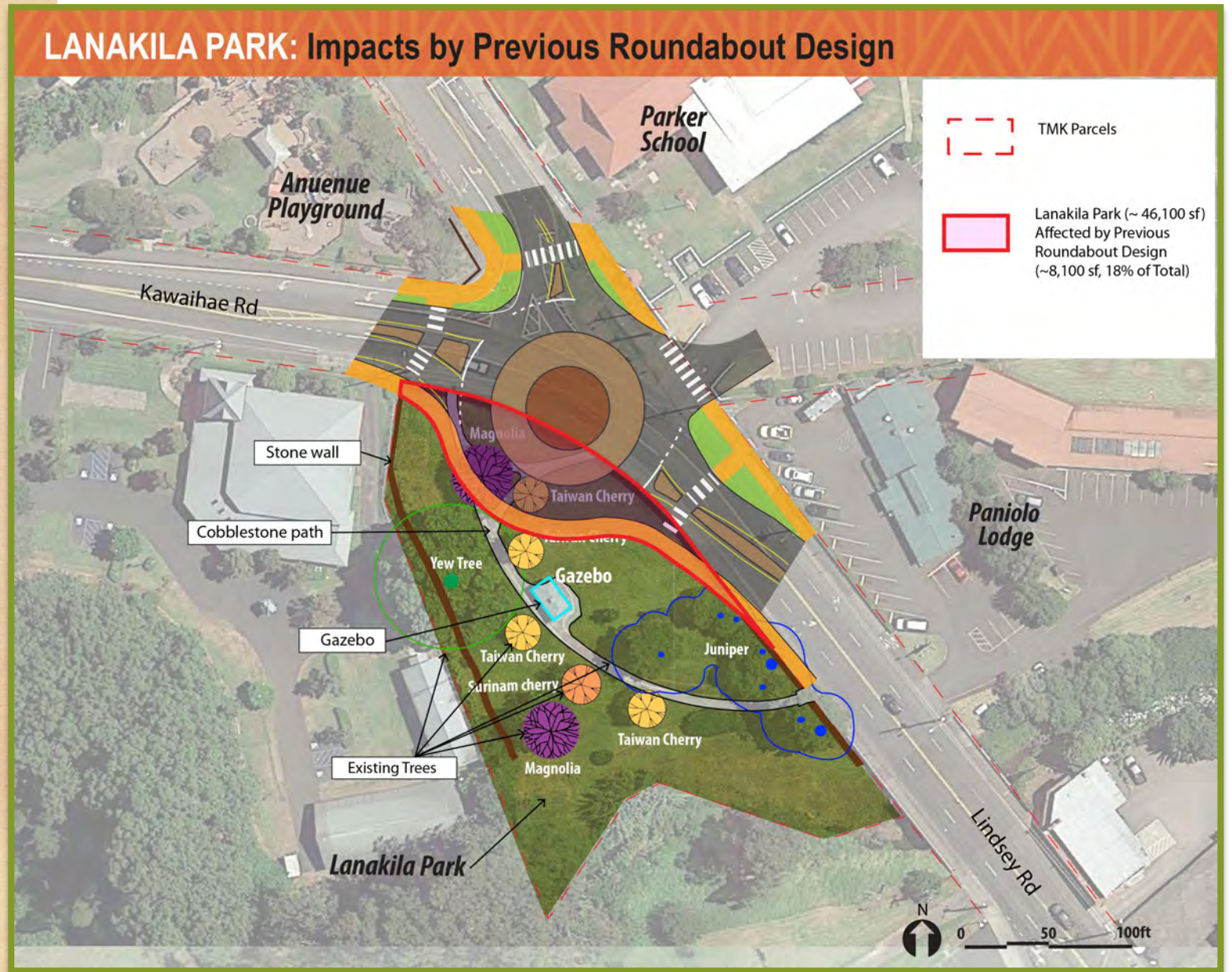
Measures to Minimize and Mitigate Impacts to Lanakila Park

Existing Park Features

LANAKILA PARK: Existing Features



Impacts to Lanakila Park from Proposed Roundabout in Draft Environmental Assessment



Identified Impacts to Park

- Identified that the roundabout design could impact park historic features and character
- Stone wall and cobblestone walkway are historic, character defining features
- Loss of magnolia tree and Taiwan cherry tree
- Proximity of construction could place the future of the large yew tree in danger

Minimization and Mitigation Features



Create a gateway feature in the community



Minimize impacts to Lanakila Park by reducing footprint of roundabout and relocating trees



Provide educational opportunity for historic feature (Lanakila Park)



Increase use of Lanakila Park by utilizing the existing pathway instead of building new sidewalk adjacent to roundabout

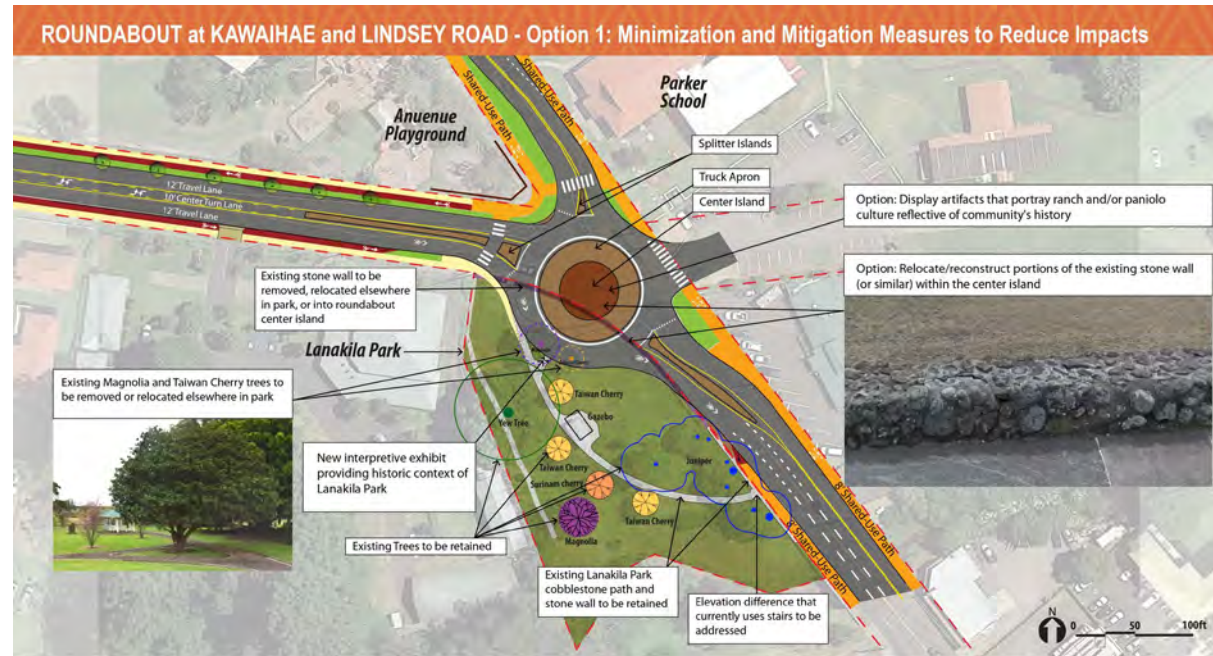


Provide pedestrian and bike access between Lanakila Park and Waimea Park



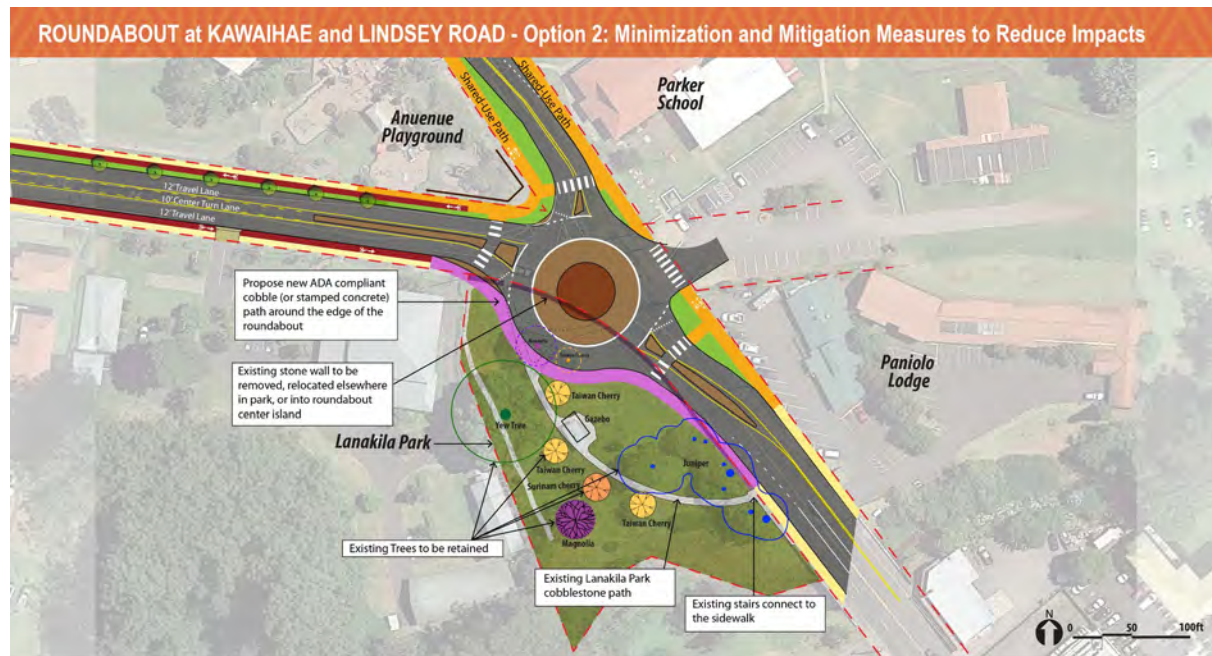
Crosswalks with refuge island enhance safety for bikes and pedestrians crossing Kawaihae Road

Revised Roundabout at Kawaihae Road and Lindsey Road – Option 1



07/17/2023

Revised Roundabout Kawaihae Road and Lindsey Road – Option 2



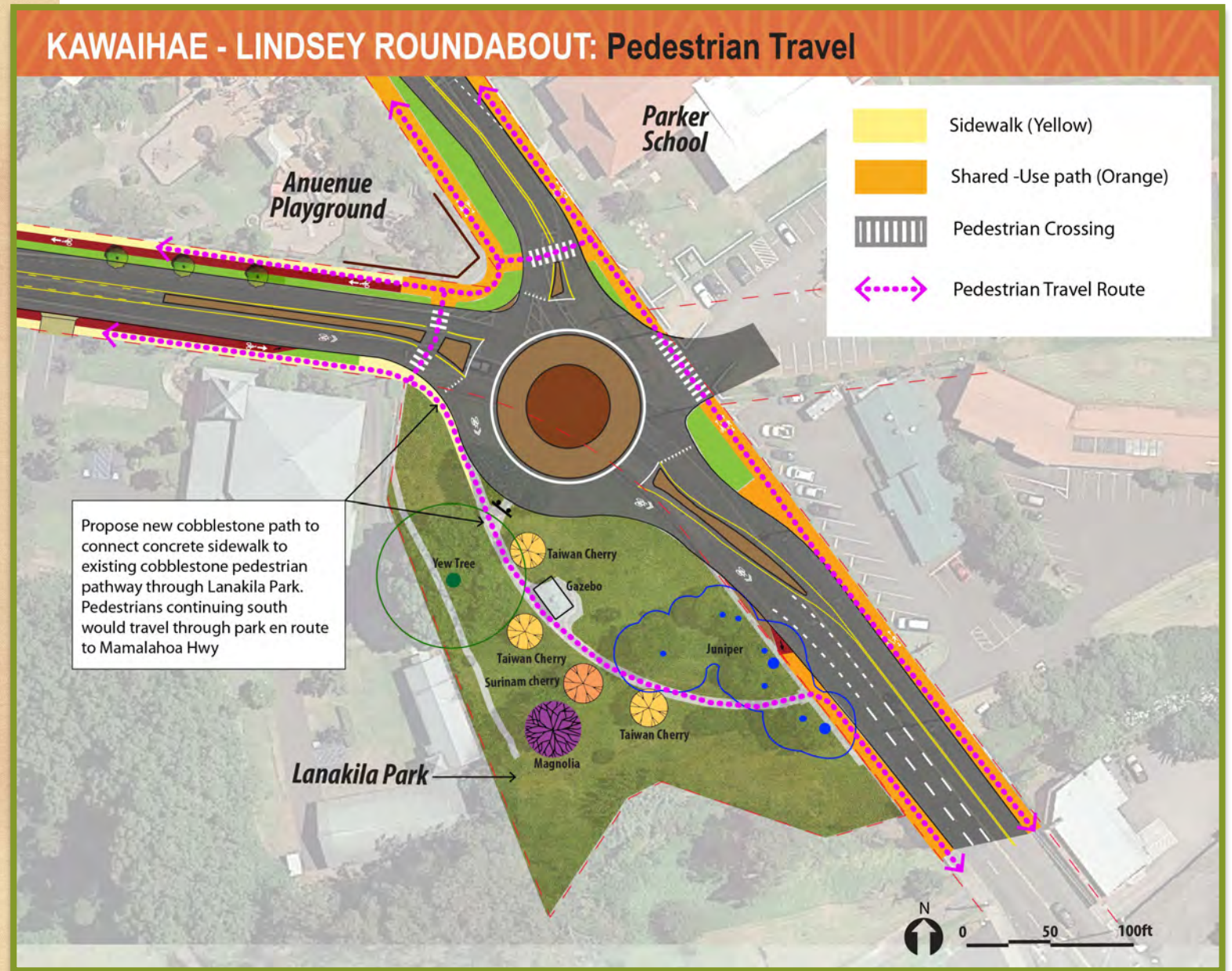
Legend:

- TMK Parcels
- Sidewalk (Yellow)
Bikeway (Red)
Landscape strip (green) with street tree
Travelway (Grey)
- Shared-Use path (Orange)
- Pedestrian Crossing
- Driveway

07/17/2023

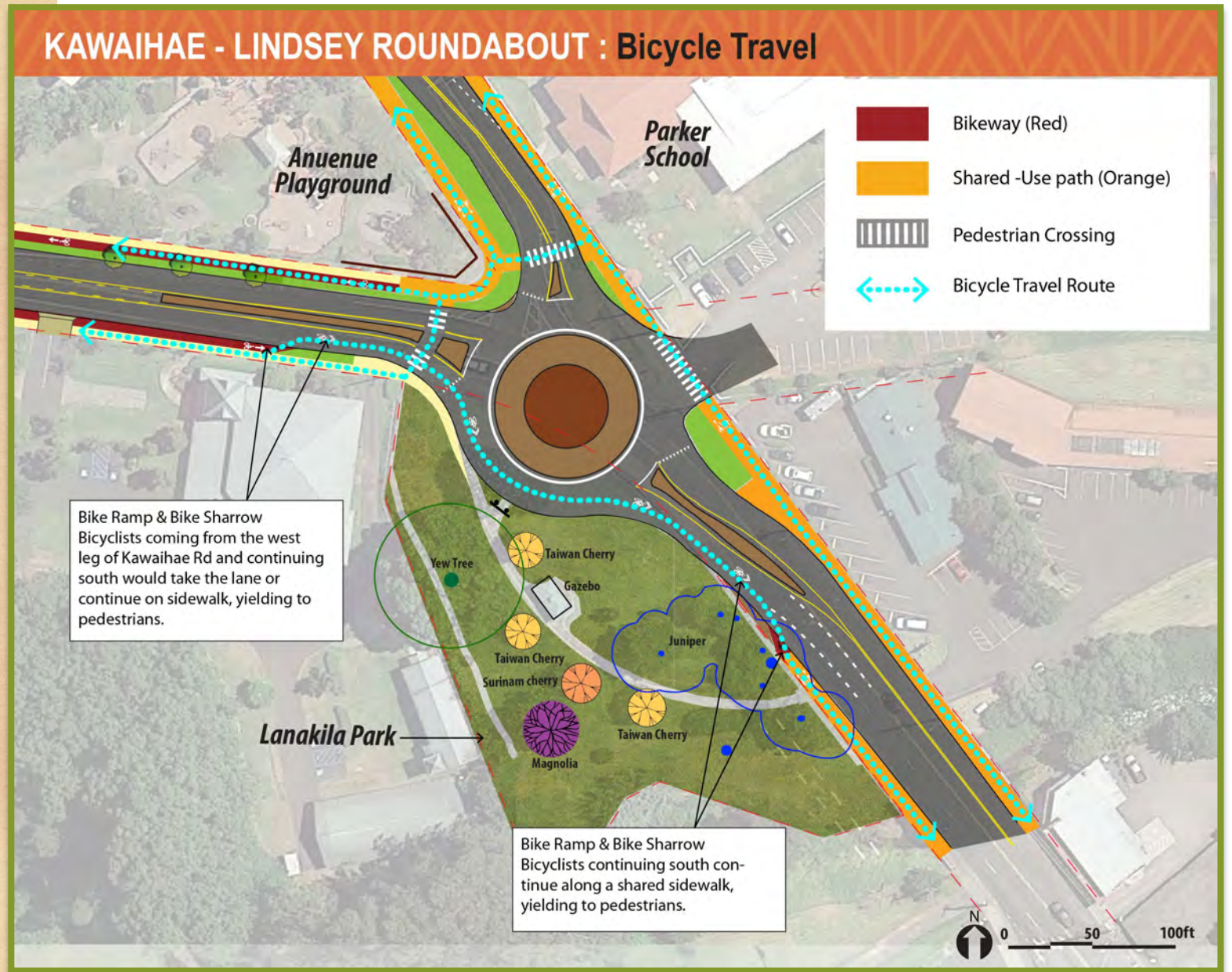
Pedestrian Travel

- Utilize Shared Use Path along both sides of Lindsey Road
- Utilize sidewalks along both sides of Kawaihae Road
- Utilize existing pathway through Lanakila Park
- Utilize crosswalks at Parker School driveway, across Lindsey Road, and across Kawaihae Road



Bicycle Travel

- Utilize Shared Use Path along both sides of Lindsey Road
- Utilize bikeway along both sides of Kawaihae Road
- Utilize roundabout leg between Kawaihae Road and Lindsey Road to Shared Use Path on west side of Lindsey Road
- Utilize crosswalks at Parker School driveway, across Lindsey Road, and across Kawaihae Road



Next Steps

1

Continue consultation with
the State Historic
Preservation Division
(Completion 4th quarter 2023)

2

Issue Final Environmental
Assessment
(1st quarter 2024)

3

Initiate Project Delivery
(Start Design: 2025)
(Start Construction: 2026)

How to Contact Us

- Brian Tyau, HDOT (Brian.Tyau@hawaii.gov)
- Jennifer Scheffel, SSFM International (jscheffel@ssfm.com)
- Project Website:
[Waimea Regional Safety Study.com](http://WaimeaRegionalSafetyStudy.com)

A photograph of a street scene. In the foreground, there is a wooden fence and a grassy area. A large tree with purple blossoms is prominent on the right. In the background, there is a road with a sign, a building, and a hillside. The word "Questions?" is overlaid in white text.

Questions?