

Report of Public Input Received During
Waimea Community Meeting
held July 27, 2023

Waimea Regional Safety Study

Prepared for
State of Hawai'i
Department of Transportation



Prepared by
SSFM International, Inc.
July 2023

This page intentionally left blank.

TABLE OF CONTENTS

Introduction	1
Part One: Presentation, Discussions, and Confirmation.....	5
I. Overview of the Meeting Purpose and Project Background	5
II. Overview of the Multimodal Improvements Presented in the Draft Environmental Assessment... 7	
Attendee Questions	11
III. Minimization and Mitigation Measures to Reduce Impacts to Lanakila Park	13
Closing and Next Steps.....	18
General Questions	18
Part Two: Written Comments Received	19
Next Steps	20
List of Attendees	21

APPENDIX A Comment Forms and Feedback Forms

This page intentionally left blank.

Introduction

The State of Hawai'i Department of Transportation published the Draft Environmental Assessment (DEA) for the Waimea Multimodal Improvements Project on March 8, 2021. As part of the environmental review process, the State of Hawai'i Department of Transportation (HDOT) has been continuing consultation with the State Historic Preservation Division of the Department of Land Natural Resources to assess potential impacts to historic resources.

At the request of the State Historic Preservation Division (SHPD), a Reconnaissance Level Survey of Lanakila Park was conducted. The results of this survey revealed that the proposed roundabout may result in adverse impacts to Lanakila Park. The project team is proposing a reduction in the size of the roundabout at Lindsey Road and Kawaihae Road to minimize and mitigate potential impacts to Lanakila Park.

At this meeting, the project team presented these minimization and mitigation measures, discussed the reduced impacts to Lanakila Park, and discussed community benefits of the minimization and mitigation measures. The community was asked for their comments on the minimization and mitigation measures regarding the new proposed roundabout. Following that, next steps were discussed.

This community meeting included a welcome and project team introductions by Ken Tatsuguchi the State of Hawai'i Department of Transportation (HDOT) Planning Branch Manager, and a presentation from the study team that included the following:

- **Part One:** An overview of the purpose of this meeting and recap of the project background.
- **Part Two:** Overview of the multimodal improvements presented in the Draft Environmental Assessment.
- **Part Three:** Review of the minimization and mitigation measures to reduce impacts to Lanakila Park.

The presentation concluded with an overview of the next steps for the project and sharing of the project team contact information for any additional questions and comments.

Alongside the presentation, were poster boards that were displayed to show the design features of the Kawaihae Road / Lindsey Road Intersection roundabout.

Attendees were asked to share their preferences for the two alternative minimization/mitigation methods that feature two different designs for the park.

This report documents the meeting and is divided into three parts:




- Part One: Presentation and Meeting Discussions
- Part Two: Written Comments
- Next Steps

Outreach

Various channels were used to inform the public about this upcoming meeting. This included emails that went out to previous Planning and Environment Linkages (PEL) community meeting and focus group participants, social media, and a newspaper ad. The meeting flyer was shared by the Waimea Community Association, South Kohala Traffic Safety Committee, and South Kohala Action Committee email lists. The flyers were also distributed in store fronts in the Waimea Shopping Center. Because some time had passed since the last round of community engagement efforts, many of the previous participants attended along with some new faces.

Newspaper “EARS” ad that was displayed on the front page of West Hawai’i Today Newspaper and Hawai’i Tribune Herald on July 25th and 26th:

<p>TODAY'S TOP NEWS</p>  <p>3-INGREDIENT ICE CREAM Be imaginatively transported to Ecuador ▶ FLAVORS, 9A</p>	 <p>STANDING STRONG Physical therapist finds joy in Strongman, hopes to inspire others ▶ SPORTS, 1B</p>	<p>WAIMEA MULTIMODAL IMPROVEMENTS PROJECT</p> <p>Community Meeting</p> <p>Thursday, July 27th 4:30 P.M. to 6:30 P.M. Waimea Elementary School Cafeteria.</p>  <p><small>FOR FUTURE INFORMATION, PLEASE VISIT PROJECT WEBSITE AT:</small></p> <p>www.waimearegionalsafetystudy.com</p>
<h1>West Hawaii Today</h1> <p>TUESDAY, JULY 25, 2023 WESTHAWAIIODAY.COM</p> <p style="text-align: right;">\$1.50</p>		

	<p>INSIDE TODAY'S EDITION</p> <ul style="list-style-type: none"> ■ Fukushima nuclear plant water release raises worries Page A5 ■ Mother accused of choking child, attacking elderly Good Samaritan.... Page A6 ■ Physical therapist finds joy competing in Strongman events Page B1 	<p>WAIMEA MULTIMODAL IMPROVEMENTS PROJECT</p> <p>Community Meeting</p> <p>Thursday, July 27th 4:30 P.M. to 6:30 P.M. Waimea Elementary School Cafeteria.</p>  <p><small>FOR FUTURE INFORMATION, PLEASE VISIT PROJECT WEBSITE AT:</small></p> <p>www.waimearegionalsafetystudy.com</p>
<p><i>Hawaii</i></p> <h1>Tribune  Herald</h1> <p>Tuesday, July 25, 2023 Proudly serving Hilo and the Big Island since 1923 \$1.50</p>		

Meeting Announcement

WAIMEA ROADWAY IMPROVEMENTS PROJECT

Please join us
at the following
community meeting:

Thursday, July 27th
4:30 P.M. to 6:30 P.M.

Waimea Elementary School Cafeteria
67-1225 Hawai'i Belt Road
Waimea, Hawai'i 96743

State of Hawai'i
Department of Transportation
Highways Division



The State of Hawai'i Department of Transportation published the Draft Environmental Assessment for the Waimea Multimodal Improvements Project on March 8, 2021. As part of the environmental review process, the State of Hawai'i Department of Transportation has been continuing consultation with the State Historic Preservation Division of the Department of Land Natural Resources to assess potential impacts to historic resources.

At the request of the State Historic Preservation Division, a Reconnaissance Level Survey was conducted of Lanakila Park. The results of this survey revealed that the proposed roundabout may result in adverse impacts to Lanakila Park. The project team is proposing a reduction in the size of the roundabout at Lindsey Road and Kawaihae Road to minimize and mitigate potential impacts to Lanakila Park.

At this meeting, the study team will present these minimization and mitigation measures, discuss the reduced impacts to Lanakila Park, and discuss community benefits of the minimization and mitigation measures. The community will be asked for their comments on the minimization and mitigation measures regarding the new proposed roundabout. Following that, next steps will be discussed.

For further information, please visit
the project website at:

www.Waimearegionalsafetystudy.com



To request special assistance or an auxiliary aid to attend this event,
please contact:

JENNIFER SCHEFFEL | ☎ (808) 356-1273 | ✉ jscheffel@ssfm.com

SSFM
International

WAIMEA REGIONAL SAFETY STUDY



COMMUNITY MEETING
THURSDAY, JULY 27, 2023
4:30 P.M. TO 6:30 P.M.

Waimea Elementary School Cafeteria
67-1225 Hawai'i Belt Rd.
Waimea, Hawaii 96743



AGENDA

1. Welcome and Introductions
2. Purpose of this meeting
3. Project Background
4. Multimodal Improvements Presented in the Draft Environmental Assessment
5. Minimization and Mitigation Measures to Reduce Impacts to Lanakila Park
6. Next Steps
7. Discussion and Questions

Aloha and Adjourn

Project website: www.waimearegionalsafetystudy.com

Part One: Presentation, Discussions, and Confirmation

Ken Tatsuguchi of the Department of Transportation (HDOT) began the meeting by welcoming everyone and introducing the project team.



The slide is titled "Introductions" and lists the following individuals:

- Hawai'i Department of Transportation
 - Ken Tatsuguchi, Head Highways Planning Engineer
 - Brian Tyau, Project Manager
 - Harry Takiue, Hawai'i District Engineer
- SSFM International, Inc.
 - Austen Drake, Hawai'i Office Manager
 - Jennifer Scheffel, Project Manager
 - Cheryl Soon, Project Principle
 - Jo-Anna Herkes, Outreach Coordinator
 - Mike Packard, Traffic Engineer
 - Heather Bartlett, Planner

The slide also features the Department of Transportation logo on the bottom left and the SSFM International logo on the bottom right. The SSFM logo includes the tagline "PROGRESSIVE • INTEGRITY • PARTNERS • CLIENT FOCUSED" and the number "2" below it.

Mr. Tatsuguchi and the consultant team then continued the presentation, which included three main parts. The full presentation is posted on the project website, www.waimearegionalsafetystudy.com.

Part One: An overview of the meeting purpose and recap of the project background.

Part Two: Overview of the multimodal improvements presented in the Draft Environmental Assessment.

Part Three: Review of the minimization and mitigation measures to reduce impacts to Lanakila Park.

I. Overview of the Meeting Purpose and Project Background

Mr. Tatsuguchi shared the purpose of the meeting, explaining that feedback from the community regarding the Kawaihae Road / Lindsey Road intersection was necessary due to potential impacts to the historic Lanakila Park. New minimization and mitigation measures were to be proposed by the project team, and community insights and feedback would be necessary for upcoming consultation with the State Historic Preservation Division (SHPD) and State Disability and Communication Access Board (DCAB).





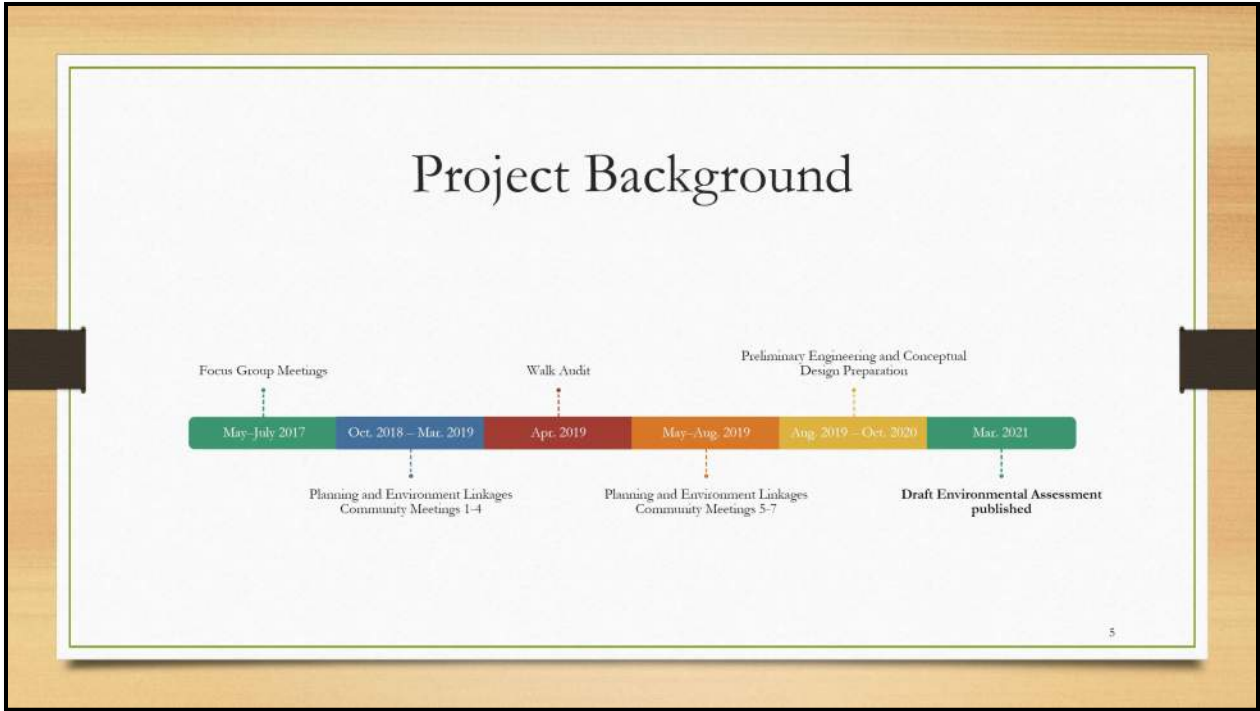
Purpose of this Meeting

- Discuss the on-going consultation with the State Historic Preservation Division
- Discuss impacts to Lanakila Park
- Discuss proposed Minimization and Mitigation Measures to reduce impacts to Lanakila Park
- Obtain Community Input regarding the proposed Minimization and Mitigation Measures

4

Austen Drake of SSFM provided a recap of the project process, and the community/stakeholder involvement. The project background discussion included an overview of the community engagement efforts - from the May 2017 Focus Group Meetings to the Planning and Environmental Linkages (PEL) meetings from October 2018 to August 2019. He shared insights on the engineering and design process and how all of this information shaped the Draft Environmental Assessment that was published in May 2021.





II. Overview of the Multimodal Improvements Presented in the Draft Environmental Assessment

Mr. Drake then discussed the engineering and design features for the draft environmental publication, which included:

- Bicycle and pedestrian improvements along Māmalahoa Highway between Waimea School and Pukalani Road,
- Intersection improvements at Māmalahoa Highway and Lindsey Road,
- The installation of a roundabout at the Kawaihae Road and Lindsey Road intersection, and
- Roadway improvements along Kawaihae Road between Lindsey Road and Opelo Road, which includes bicycle and pedestrian treatments along both sides of Kawaihae Road to Opelo Road.

Mr. Drake then displayed the conceptual maps of the various transportation improvements across Waimea Town that were proposed in the Draft Environmental Assessment.



Proposed Action Presented in the Draft Environmental Assessment



Bicycle and pedestrian treatments along Māmalahoa Highway between Waimea School and Pukalani Road



Intersection improvements at Māmalahoa Highway and Lindsey Road



Installation of a roundabout at the Kawaihae Road and Lindsey Road intersection



Roadway improvements along Kawaihae Road between Lindsey Road and Opelo Road, including bicycle and pedestrian treatments along both sides of the Kawaihae Road to Opelo Road

6

Conceptual maps from the Draft Environmental Assessment:



Legend:
 Existing Shoulder
 New Left Turn Lane

Māmalahoa Highway Multimodal Improvements

(Pukalani Road to Lindsey Road)

7



Māmālahoa Highway Multimodal Improvements

(Canada-France-Hawaiʻi
Telescope to Kaomoloa Road)

10



Kawaihae Road and Lindsey Road Multimodal Improvements

11

Attendee Questions

At this point in the presentation questions were asked about the Kawaihae Road and Lindsey Road roundabout design:

#	QUESTION/COMMENT	RESPONSE
1	Concern about raised sidewalks and ped/bike crossings – don't fill Waimea Town with flashing signs	Thank you for your feedback.
2	How many trucks would fit in the roundabout? If two trucks went through the roundabout from opposite directions, would they block the roundabout or not be able to get through?	Trucks traveling in opposing directions along Kawaihae Road would be able to pass each other in the roundabout without impact/delay. The inscribed circle diameter of the roundabout will be approximately 125 feet which compensates for the turning radius of a trailer truck resembling the largest trucks that go to and from the Kawaihae Harbor. Additionally, the roundabout is designed with a truck apron which provides additional space for large vehicles to complete their turn.
3	What is the proposed speed limit?	The existing speed limit on Kawaihae Road in the area is 30 mph, however roundabouts typically have advisory speeds (the sign that goes underneath the sign for the posted speed limit) of 15-20 mph.
4	From 8am to 10am and 3:30pm to 5:30pm traffic is completely backed up on Kawaihae Road. Wont this roundabout exacerbate (or not address) the existing traffic congestion issues?	It is anticipated that the road improvements along Kawaihae Road and intersection improvements proposed at Mamalahoa Highway and Lindsey Road will help reduce traffic congestion. The roundabout will provide relief for drivers turning to and from Lindsey Road without significantly impacting travel along Kawaihae Road. It is acknowledged that these treatments might not solve traffic during all times, however if we designed to the one worst hour of the day, that would result in underutilized roads the rest of the time that may result in increased speeding and unsafe road conditions for all users.
5	What communities did you consult for this project? Why didn't I hear about it?	Previous community engagement efforts took place from May 2017 to August 2019: <ul style="list-style-type: none"> • May 4, 2017: Waimea Community Association Town Meeting, • May 2017-April 2019: discussed in 21 South Kohala Traffic Safety Committee meetings, • May-July 2017: 4 small group meetings, • October 2018-August 2019: series of 7 Planning and Environment Linkages (PEL) meetings, • February 2019: Focus Group Meetings, • April 22, 2019: Waimea Community Walk Audit.
6	How would this project relate to the variety of concerns about the Pāhoa roundabout?	Since completion, there have been no traffic fatalities at the Pāhoa roundabout which used to be one of the most dangerous intersections in the State.
7	What is the accident rate at the Kawaihae/Lindsey intersection currently?	While reducing traffic accidents is important, the main driver for this project was to ensure safety for pedestrians and bicyclists around Parker School,

		nearby churches, the Lanakila Park, and the Anueanue Playground.
8	What is the width of the lanes in the roundabout?	They are typically designed to be 14-16 ft.
9	How will people get through area during construction?	Size of the roundabout as compared to the existing intersection would enable one side to be worked on at a time, thereby reducing impacts to travel, however a more detailed plan would be prepared by the contractor.
10	Concern about potential temporary access during construction, length of time for construction.	The surrounding community is currently working in concert with the project team and will continue to be consulted during the design/construction phases.
11	What is the timing for this project alongside the Waiaka Bridge? Concern about two projects happening at the same time.	The design and acquisition would take about 4 years and we estimate about 5 years until construction starts. The Waiaka Bridge is ahead in the project schedule so it is unlikely construction will occur at the same time.
12	Why is there a curve as you enter the roundabout from the Māmalahoa Highway intersection?	This is called a deflection area and it forces cars to slow down as they enter the roundabout which is a function of the design. It is a method of traffic calming.

Kawaihau Road Multimodal Improvements

(Opelo Road Sample Cross-
Section, Implemented from
Opelo Road to Lindsey Road)

12

The consultant team then discussed the State Historic Preservation Division (SHPD) consultation process. In August 2021 an Archaeological Inventory Survey was requested, then in March 2023 a Reconnaissance Level Survey was requested to measure impacts to the historic Lanakila Park. The results of this survey indicated need to propose minimization and mitigation measures to reduce these impacts.

State Historic Preservation Division Consultation



13

III. Minimization and Mitigation Measures to Reduce Impacts to Lanakila Park

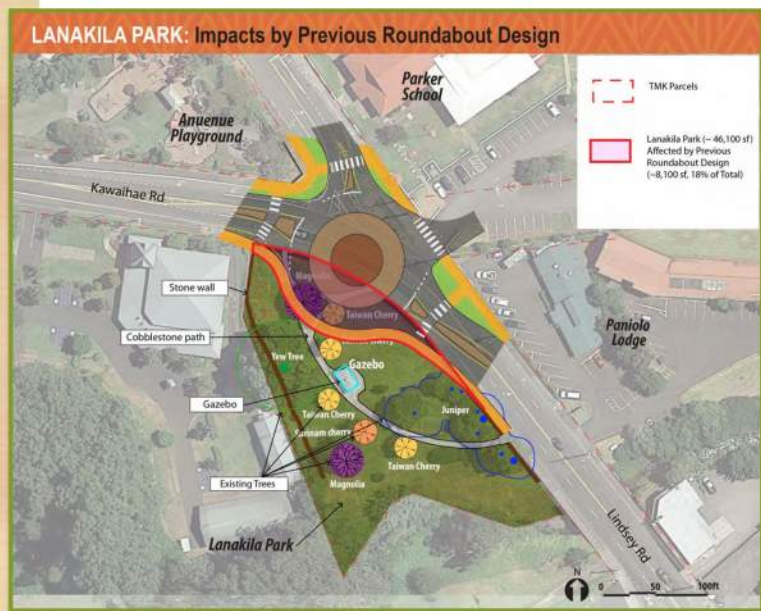
Mike Packard of SSFM discussed the proposed measures to reduce impacts to Lanakila Park. Mr. Packard initiated the discussion by reviewing the existing park features the impacts to the park from the proposed roundabout in the Draft Environmental Assessment which would encompass approximately 18% of the park area.

Existing Park Features



15

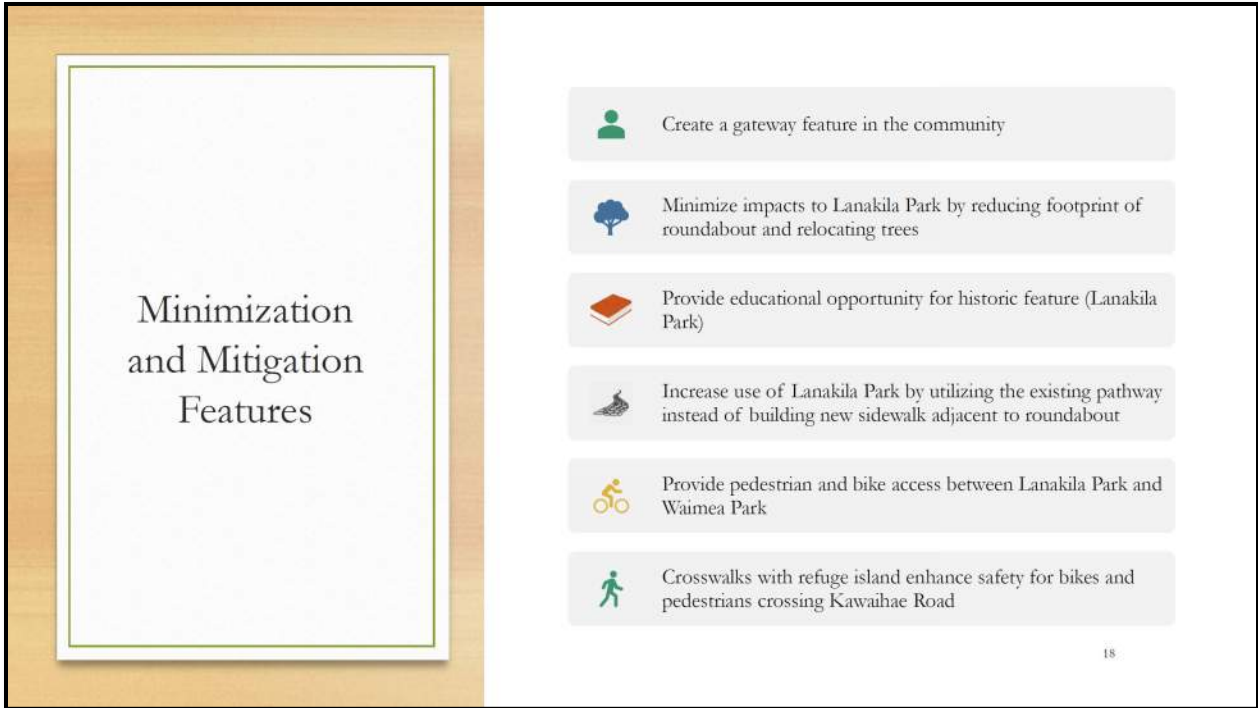
Impacts to Lanakila Park from Proposed Roundabout in Draft Environmental Assessment



Identified Impacts to Park

- Identified that the roundabout design could impact park historic features and character
- Stone wall and cobblestone walkway are historic, character defining features
- Loss of magnolia tree and Taiwan cherry tree
- Proximity of construction could place the future of the large yew tree in danger

17



Mr. Packard continued by discussing two options that would minimize impacts to Lanakila Park:

- Option 1: Remove the sidewalk adjacent to the roundabout and route pedestrians through the park utilizing the existing path (cobblestones may need to be replaced with ADA compliant surface).
- Option 2: Retain the sidewalk adjacent to the roundabout but design it in such a way that it is consistent with the park features (e.g., rock walls, cobblestone stamped concrete).

The project team shared that the reason for consulting with the community overall was to understand and incorporate community sentiment into upcoming consultations with the State Historic Preservation Division (SHPD) and the Disability and Communication Access Board (DCAB). Additionally, upcoming consultation with a certified arborist would determine if some of the trees could be safely relocated or if they would be otherwise impacted by the construction. They shared that as the project moves ahead, there was still more to figure out as to whether the proposed options would adequately mitigate impacts to the park, the trees, and related accessibility concerns. In the meantime, it was important that the community know what the issues are and have an opportunity to weigh in.

Mr. Tatsuguchi asked attendees how often they frequent the Lanakila Park, and if they could describe the significance it has to the community. Many community members responded that they do not use the park. A discussion was had about how a lack of nearby parking makes accessing the park challenging and that a population of homeless people who reside in and around the park makes it uninviting to visit. It was suggested that improving access and providing additional functionality to the park could serve to activate the park and increase its usage overall.

Mr. Tatsuguchi then asked the community what their sentiment on the project was overall. While there were concerns expressed on aspects of the roundabout design and its possible impacts (see table to

follow), the project as a whole was generally supported. The group discussed efforts that could be taken to adequately mitigate impacts to the park.

Revised Roundabout at Kawaihae Road and Lindsey Road – Option 1

19

Revised Roundabout Kawaihae Road and Lindsey Road – Option 2

20

Attendees were provided an opportunity to ask questions and provide comments on the proposed options, as follows.

#	QUESTION/COMMENT	RESPONSE
1	Access to Lanakila Park is not easy.	General discussion about lack of parking, and limited pedestrian crossings from nearby parks and Parker School.
2	Homeless use the park.	Activation of the Lanakila Park could be considered a way to protect historic integrity and character by reducing congregation of people experiencing homelessness.
3	The park is not frequently used by the community.	This seems to be connected to the parking limitations and homeless concerns at Lanakila Park. Note: The discussion about park usage is described in greater detail at the bottom of page 15 .
4	The walkway through Lanakila Park is bumpy.	Noted. This comment was also tied to the discussion about ADA concerns.
5	Can magnolia tree be relocated? The tree is a very important feature of the park.	The project team is consulting with an arborist to review options.
6	Is the Taiwan cherry tree significant?	Not sure of how unique those trees are however there are several others located throughout the park.
7	What we need is a bypass road.	Mahalo for your feedback. This project is one of two that resulted from the Planning and Environmental Linkages (PEL) community meetings. The Waimea bypass was the other project that was identified and may be pursued in the future should funds become available.
8	Mothers struggle to push strollers along the cobblestone walkway.	Cobblestone may need to be smoothed if it becomes the primary walkway.
9	Most people will want to walk around the roundabout rather than through the park (shorter path).	Noted as something we will consider.
10	Crosswalks are too close to the roundabout – ex: need to look at location of bus stops.	Having the crosswalks close to the roundabout is purposeful as cars are supposed to slow down as they approach and are required to yield.
11	This will exacerbate traffic issues – ex: Saturday farmers market.	Important to balance the need to make it easier to drive through area with the need to make it safer for pedestrians.

Closing and Next Steps



At this stage in the presentation the next steps for the project were shared with attendees. Participants were encouraged to send feedback to the project team so that it can be considered while the team moves forward with the State Historic Preservation Division (SHPD) and Disability and Communication Access Board (DCAB).

General Questions

At the end of the presentation, participants were given an opportunity to ask additional questions and make general comments. The following comments were shared:

#	COMMENT	RESPONSE
1	Improvements are needed for Koamoloa Rd Intersection.	Discussed nature of improvements and identified that the issue is already part of the existing plan.
2	Power point and display boards were hard to read and see.	Mahalo for your feedback.

Part Two: Written Comments Received

A Comment form was handed to all attendees when they entered the meeting. The Comment form stated, “Please provide input on community needs and alternatives to address those needs and/or any environmental, economic, or community issues.” Four Comment forms were handed in at the end of the meeting.

Attendees were provided a Feedback form to provide input to the consultant team regarding the meeting. Eight Feedback forms were handed in at the end of the meeting.

All comments received are provided in the following table.

#	Comment
Comment Form 1	Thanks for the engagement. My input as someone who turns left through the Kawaihae/Lindsey intersection daily, the roundabout is a big improvement. Park: Is not used to any significant degree. My vote is to keep the original size of the roundabout. If that’s not possible then my preference is option 1, with flattening out the path through the park. The cobble path is pretty but unsafe – would vote to just replace it.
Comment Form 2	Plans promote greater use and access to Lanakila Park. Lanakila Park is underutilized in its current state. Great to see multimodal improvements come to Waimea.
Comment Form 3	We need to get through traffic out of the middle of town!
Comment Form 4	1: Use your drone to hover over Lindsey/Kawaihae road on different traffic days and times to adjust thins like Parker School Saturday Farmers Market, School Drop-offs, game days in adjoining Waimea Park. The impact to adjust is backup [?], excess parking needs during events and pedestrian needs/impact on traffic. 2: Crosswalks are way too close to circle and [?] to direct pedestrians more aware of reasonable crossing. Main thing is to adjust for best flow! Prefer option 1 with ADA modification using cobblestone interior with ADA alongside. Then fence way around circle from back at church to main intersection to keep pedestrians away.
Feedback Form 1	Thanks for the presentation and for taking the heat for a publicly initiated project.
Feedback Form 2	Well done! Sound/audio difficult. Visuals difficult. Make maps larger.
Feedback Form 3	Outreach recommendation: paid advertisement on social media platforms.
Feedback Form 4	Contact Parker School and churches in the area and ask them to share with employees and parents and parishioners. Please move forward with the project as quickly as possible. Thank you.
Feedback Form 5	Outreach recommendation: direct mail to all in Waimea. 1. Driveway entrance goes directly into roundabout. 2. Need alternate route to other parts of town. 3. Require scale for drawings to show relative size of roundabout.
Feedback Form 6	Outreach recommendation: radio / NPR. Concerned about crosswalks so close to roundabout. Already too many flashing lights, too many yellow signs.

#	Comment
Feedback Form 7	Outreach recommendation: hold a meeting in Waikoloa Village and Kawaihae. The South Kohala Community Development Plan's Action Committee will add this to our next agenda. What's the deadline for comments? [SSFM staff provided follow-up communication].
Feedback Form 8	Outreach recommendation: PSA all stations. Why not check with preservation before spending development cost in planning to find out cannot do what all the town meetings time spent to just "punt". Terrible planning and money spent!

Next Steps

Next steps for this project would include further consultation with SHPD and DCAB to gain their expertise on the measures to reduce impacts on the Lanakila Park. Design options would be dependent on the mitigation measures advised, and decisions made would be shaped by the public feedback received.

Once the final design for the roundabout has been selected, the Environmental Assessment for the project will be altered to express these minimization and mitigation measures, along with a discussion on the impacts that were identified by the Reconnaissance Level Survey. Once compliance with the Hawai'i Revised Statutes (HRS) Chapter 343 process has been obtained, the project can then proceed through the final design and construction phases.

List of Attendees

The following table provides a list of the attendees at community meeting held on July 27, 2023 at the Waimea School Cafeteria. There were 22 people in attendance at the meeting.

ATTENDEE	AFFILIATION
Melody Salinas	Resident
Patti Cook	Waimea Community Association; Waimea Middle School
James Kong	Resident
Nancu Moser	Resident
Stephen Dunn	Parker School
J William Sanborn	Waimea Preservation Association
Margaret Wille	Resident
Karen McCullough	Resident
Tim McCullough	Resident
James Hustace	South Kohala Traffic Safety Committee
Alex Swinderski	Resident
Steve Kittell	Resident
Kealoha Madriaga	Hawai'i Public Health Institute (HIPHI)
Robert McKendry	Parker School
Jan Marrack	Resident
David Tarnas	State House
Gunner Mench	South Kohala Traffic Safety Committee
M. Kapuniaia Kanani	[?]
Troy Familiar	Resident
Ruth A. Smith	South Kohala Community Development Plan Action Committee Chair
Jonathan Mitchell	Parker Ranch
Sandy Edrica	Resident

This page intentionally left blank.

Appendix A – Comment Forms and Feedback Forms

This page intentionally left blank.

WAIMEA REGIONAL SAFETY STUDY



**THURSDAY, JULY 27, 2023
4:30 P.M. TO 6:30 P.M.**

Waimea Elementary School Cafeteria
67-1225 Hawai'i Belt Road, Waimea, Hawaii 96743

COMMENT FORM

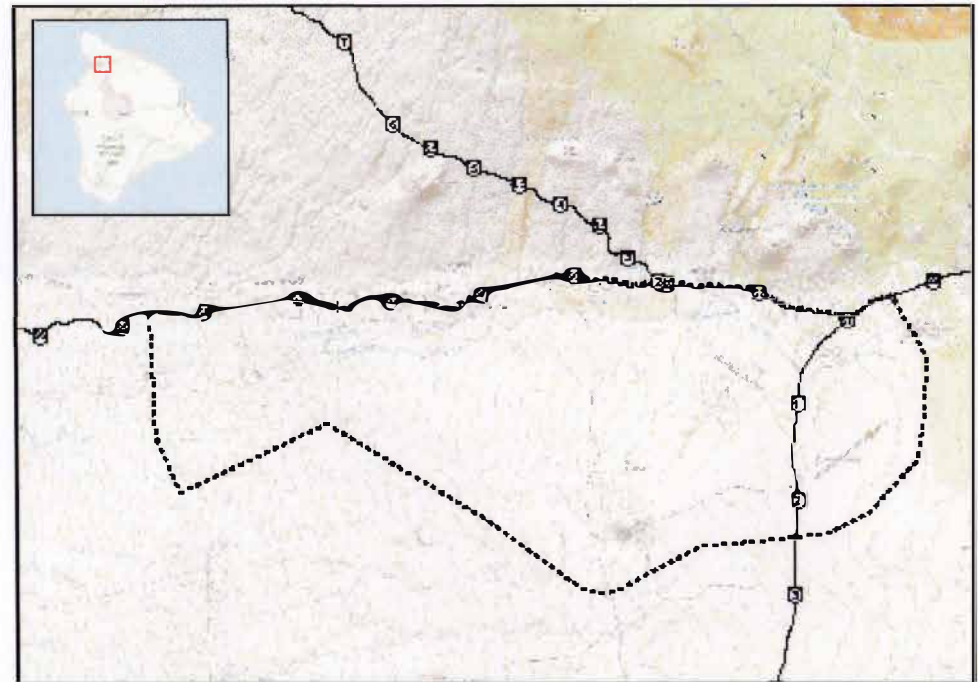
Please provide input on community needs and alternatives to address those needs and/or any environmental, economic, or community issues.

THANKS FOR THE ENGAGEMENT. MY INPUT
AS SOMEONE WHO TURNS LEFT THROUGH THE
KAWAHAE/LINDSEY INTERSECTION DAILY, THE ROUNDABOUT
IS A BIG IMPROVEMENT.

- PARK: IS NOT USED TO ANY SIGNIFICANT DEGREE.

MY VOTE IS TO KEEP THE ORIGINAL SIZE OF THE
ROUNDABOUT. IF THAT'S NOT POSSIBLE, THEN MY
PREFERENCE IS OPTION 1, WITH FLATTENING OUT
THE PATH THROUGH THE PARK. THE COBBLE PATH IS PRETTY,
BUT UNSAFE - WOULD VOTE TO JUST REPLACE IT.

THANKS AGAIN!



Other ways to submit your comments:

Mail to:



99 Aupuni Street, Suite 202
Hilo, Hawaii 96720

Email to:

jscheffel@ssfm.com | Brian.Tyau@hawaii.gov

Project Website:

www.waimearegionalsafetystudy.com

WAIMEA REGIONAL SAFETY STUDY



**THURSDAY, JULY 27, 2023
4:30 P.M. TO 6:30 P.M.**

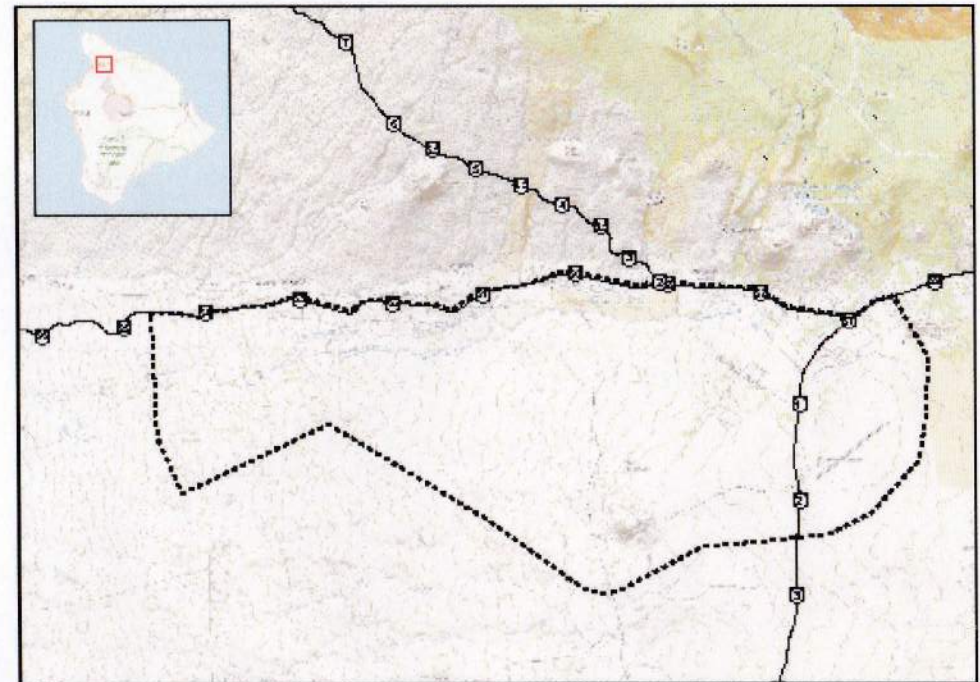
Waimea Elementary School Cafeteria
67-1225 Hawai'i Belt Road, Waimea, Hawaii 96743

COMMENT FORM

Please provide input on community needs and alternatives to address those needs and/or any environmental, economic, or community issues.

*Plans promote greater use and access to Lanakila park.
Lanakila park is under utilized in its current state.*

Great to see multi-modal improvements come to Waimea.



Other ways to submit your comments:

Mail to:



99 Aupuni Street, Suite 202
Hilo, Hawaii 96720

Email to:

jscheffel@ssfm.com | Brian.Tyau@hawaii.gov

Project Website:

www.waimearegionalsafetystudy.com

WAIMEA REGIONAL SAFETY STUDY



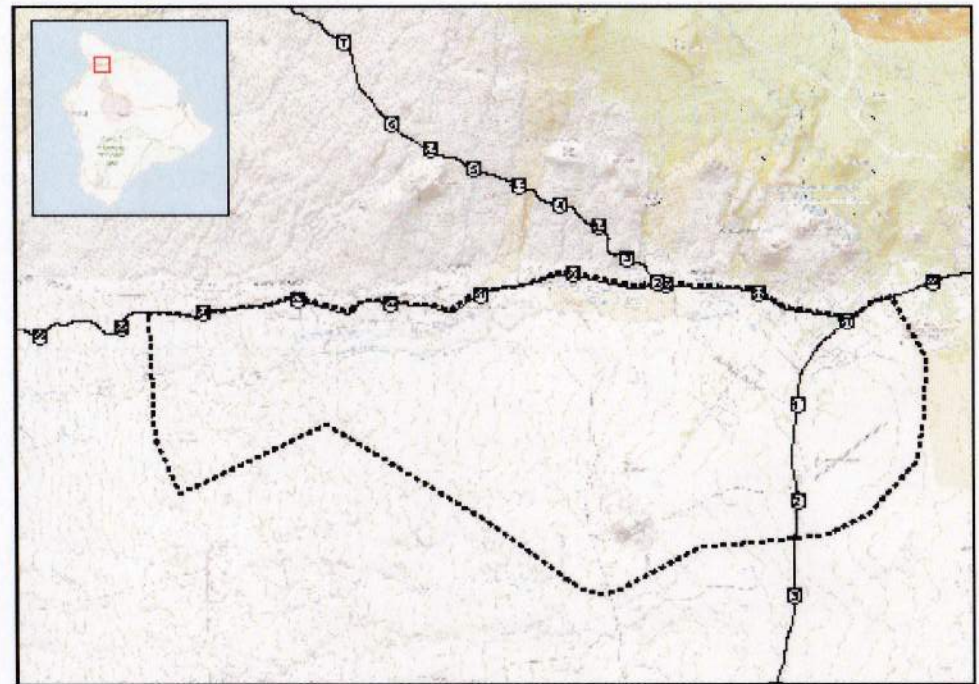
**THURSDAY, JULY 27, 2023
4:30 P.M. TO 6:30 P.M.**

Waimea Elementary School Cafeteria
67-1225 Hawai'i Belt Road, Waimea, Hawaii 96743

COMMENT FORM

Please provide input on community needs and alternatives to address those needs and/or any environmental, economic, or community issues.

through
we need to get traffic out
of the middle of town!



Other ways to submit your comments:

Mail to:



99 Aupuni Street, Suite 202
Hilo, Hawaii 96720

Email to:

jscheffel@ssfm.com | Brian.Tyau@hawaii.gov

Project Website:

www.waimearegionalsafetystudy.com

WAIMEA REGIONAL SAFETY STUDY



THURSDAY, JULY 27, 2023
4:30 P.M. TO 6:30 P.M.

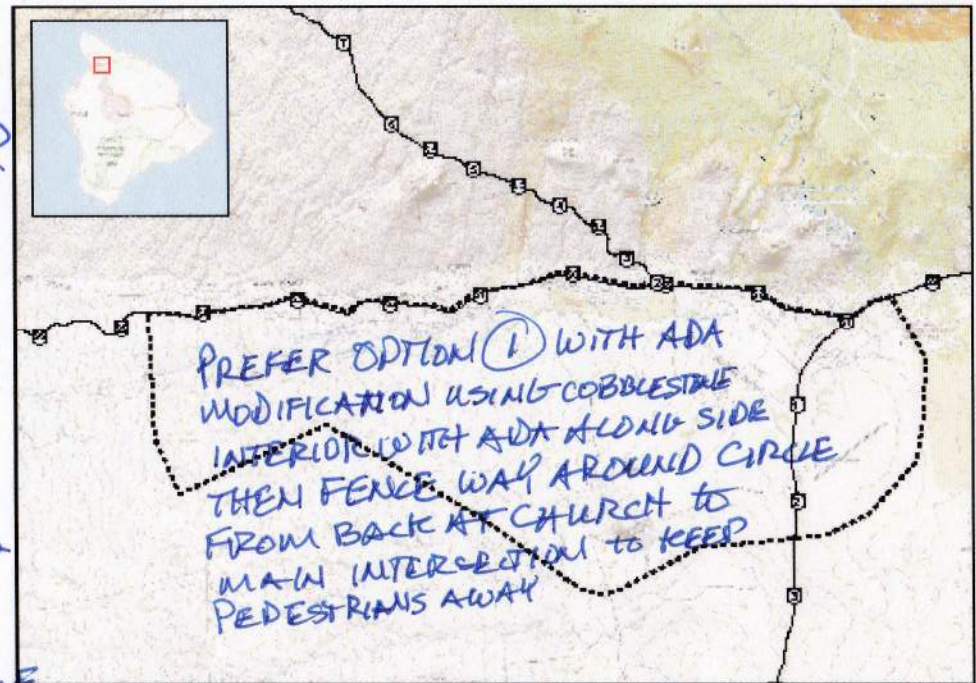
• Waimea Elementary School Cafeteria
67-1225 Hawai'i Belt Road, Waimea, Hawaii 96743

COMMENT FORM

Please provide input on community needs and alternatives to address those needs and/or any environmental, economic, or community issues.

① USE YOUR DRONE TO HOVER OVER LINDSEY/RAWA HAE ROAD ON DIFFERENT ^{TRAFFIC} DAYS AND TIMES TO ADJUST THINGS LIKE PARKER SCHOOL SATURDAY FARMER MARKET, SCHOOL DROPOFFS, GAME DAYS IN ADJOINING WAIMEA PARK. THE IMPACT TO ADJUST IS BACKUP STACKING, EXCESS PARKING NEEDS DURING EVENTS AND PEDESTRIAN NEEDS/IMPACT ON TRAFFIC

② CROSS WALKS ARE WAY TOO CLOSE TO CURVE AND FENCING TO DIRECT PEDESTRIANS AROUND AWARE OF REASONABLE CROSSING. MAINTENANCE IS TO ADJUST FOR BEST FLOW!



Other ways to submit your comments:

Mail to:



99 Aupuni Street, Suite 202
Hilo, Hawaii 96720

Email to:

jscheffel@ssfm.com | Brian.Tyau@hawaii.gov

Project Website:

www.waimearegionalsafetystudy.com

WAIMEA REGIONAL SAFETY STUDY



THURSDAY, JULY 27, 2023

4:30 P.M. TO 6:30 P.M.

Waimea Elementary School Cafeteria

67-1225 Hawai'i Belt Road, Waimea, Hawaii 96743

GIVE US YOUR FEEDBACK

1. How did you hear about this meeting?

I received an email.

2. Do you have other suggestions for how to distribute this information?

3. Did the meeting provide information useful to you?

Yes No

4. What do you want to tell us about?

*Thank for the presentation & for taking the lead
for a probably initiated project.*

SSFM
International

99 Aupuni Street, Suite 202
Hilo, Hawaii 96720

Project Website
www.waimearegionalsafetystudy.com

*Mahalo for Attending
and Providing your Input*

WAIMEA REGIONAL SAFETY STUDY



THURSDAY, JULY 27, 2023
4:30 P.M. TO 6:30 P.M.

Lane Kila

Waimea Elementary School Cafeteria
67-1225 Hawai'i Belt Road, Waimea, Hawaii 96743

GIVE US YOUR FEEDBACK

1. How did you hear about this meeting?

WCA e news, mtg + FB/social media

2. Do you have other suggestions for how to distribute this information?

well done!

3. Did the meeting provide information useful to you?

Yes _____ No _____

*Sound/Audio difficult
Visuals difficult -
make ~~maps~~ ^{maps} larger*

4. What do you want to tell us about?



99 Aupuni Street, Suite 202
Hilo, Hawaii 96720
Project Website
www.waimearegionalsafetystudy.com

*Mahalo for Attending
and Providing your Input*

WAIMEA REGIONAL SAFETY STUDY



**THURSDAY, JULY 27, 2023
4:30 P.M. TO 6:30 P.M.**

Waimea Elementary School Cafeteria
67-1225 Hawai'i Belt Road, Waimea, Hawaii 96743

GIVE US YOUR FEEDBACK

1. How did you hear about this meeting?

*Waimea Community Association
South Kohala Traffic Safety Committee*

2. Do you have other suggestions for how to distribute this information?

Paid advertisement on social media platforms

3. Did the meeting provide information useful to you?

Yes _____ No _____

4. What do you want to tell us about?

SSFM
International

99 Aupuni Street, Suite 202
Hilo, Hawaii 96720

Project Website
www.waimearegionalsafetystudy.com

*Mahalo for Attending
and Providing your Input*

WAIMEA REGIONAL SAFETY STUDY



THURSDAY, JULY 27, 2023

4:30 P.M. TO 6:30 P.M.

Waimea Elementary School Cafeteria
67-1225 Hawai'i Belt Road, Waimea, Hawaii 96743

GIVE US YOUR FEEDBACK

1. How did you hear about this meeting?

EMAIL FROM A FRIEND WHO HEARD ABOUT IT.

2. Do you have other suggestions for how to distribute this information?

CONTACT PARKER SCHOOL AND CHURCHES IN THE AREA AND ASK THEM TO SHARE W/ EMPLOYEES AND PARENTS AND PARISHIONERS

3. Did the meeting provide information useful to you?

Yes No

4. What do you want to tell us about?

PLEASE MOVE FORWARD WITH THE PROJECT AS QUICKLY AS POSSIBLE. THANK YOU.

SSFM
International

99 Aupuni Street, Suite 202
Hilo, Hawaii 96720

Project Website
www.waimearegionalsafetystudy.com

*Mahalo for Attending
and Providing your Input*

WAIMEA REGIONAL SAFETY STUDY



**THURSDAY, JULY 27, 2023
4:30 P.M. TO 6:30 P.M.**

Waimea Elementary School Cafeteria
67-1225 Hawai'i Belt Road, Waimea, Hawaii 96743

GIVE US YOUR FEEDBACK

1. How did you hear about this meeting?

SOUTH KOHALA TRAFFIC SAFETY COMMITTEE

2. Do you have other suggestions for how to distribute this information?

DIRECT MAIL TO ALL IN WAIMEA

3. Did the meeting provide information useful to you?

Yes _____ No _____

4. What do you want to tell us about?

1. DRIVEWAY ENTRANCE GOES DIRECTLY IN TO ROUNDABOUT
2. NEED ALTERNATE ROUTE TO OTHER PARTS OF TOWN
3. REQUIRE SCALE FOR DRAWINGS TO SHOW RELATIVE SIZE OF ROUNDABOUT

SSFM
International

99 Aupuni Street, Suite 202
Hilo, Hawaii 96720

Project Website
www.waimearegionalsafetystudy.com

*Mahalo for Attending
and Providing your Input*

WAIMEA REGIONAL SAFETY STUDY



THURSDAY, JULY 27, 2023

4:30 P.M. TO 6:30 P.M.

Waimea Elementary School Cafeteria
67-1225 Hawai'i Belt Road, Waimea, Hawaii 96743

GIVE US YOUR FEEDBACK

1. How did you hear about this meeting?

an email - don't remember who sent -
perhaps Waimea Community Assoc

2. Do you have other suggestions for how to distribute this information?

radio - npr

3. Did the meeting provide information useful to you?

Yes

No

4. What do you want to tell us about?

concerned about crosswalks so close
to round-a-bout. Already too many
flashing lights, too many yellow signs.

SSFM
International

99 Aupuni Street, Suite 202
Hilo, Hawaii 96720

Project Website
www.waimearegionalsafetystudy.com

*Mahalo for Attending
and Providing your Input*

WAIMEA REGIONAL SAFETY STUDY



THURSDAY, JULY 27, 2023
4:30 P.M. TO 6:30 P.M.

Waimea Elementary School Cafeteria
67-1225 Hawai'i Belt Road, Waimea, Hawaii 96743

GIVE US YOUR FEEDBACK

1. How did you hear about this meeting?

SK Traffic Safety Comm Email alert

2. Do you have other suggestions for how to distribute this information?

Hold a meeting in Waikoloa Village
& Hanalei

3. Did the meeting provide information useful to you?

Yes No

4. What do you want to tell us about?

The S. Kohala Comm Dev. Plan's Action Committee
will add this to our next agenda. What's the
deadline for comments?
RUTH SMITH - Chair SCDP-AC (808) 896-7500
ras.waikoloa@aol.com

SSFM
International

99 Aupuni Street, Suite 202
Hilo, Hawaii 96720
Project Website
www.waimearegionalsafetystudy.com

*Mahalo for Attending
and Providing your Input*

WAIMEA REGIONAL SAFETY STUDY



THURSDAY, JULY 27, 2023
4:30 P.M. TO 6:30 P.M.

Waimea Elementary School Cafeteria
67-1225 Hawai'i Belt Road, Waimea, Hawaii 96743

GIVE US YOUR FEEDBACK

1. How did you hear about this meeting?

WORD OF MOUTH

2. Do you have other suggestions for how to distribute this information?

PSA ALL STATIONS

3. Did the meeting provide information useful to you?

Yes _____

No X _____

4. What do you want to tell us about?

WHY NOT CHECK WITH PRESERVATION BEFORE
SPENDING DEVELOPMENT COST IN PLANNING
TO FIND OUT CANNOT DO WHAT ALL THE "PUNIT"
TOWN MEETINGS TIME SPENT TO JUST "PUNIT"!
TERRIBLE PLANNING AND MONEY SPENT.

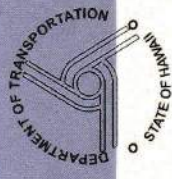


99 Aupuni Street, Suite 202
Hilo, Hawaii 96720

Project Website
www.waimearegionalsafetystudy.com

Mahalo for Attending
and Providing your Input

WAIMEA REGIONAL SAFETY STUDY



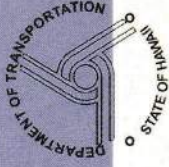
SIGN-IN SHEET

Thursday, July 27, 2023 @ 4:30 PM

Waimea Elementary School Cafeteria | 67-1225 Hawai'i Belt Rd., Waimea, Hawaii 96743

NAME	ORGANIZATION	PHONE	EMAIL
Melody Salinas		(808) 938-1030	melody@hawaii.net
Paula Coyle	WCA - WRH	808-937-2833	coyle@wca.com
James Kous		808-981-3262	jkous@wca.com
Nancy Moser		808-428-8866	nmoser@wca.com
STEPHEN PUNN	Park School	808-885-7133	spunn@parkerschoolhawaii.org
HARRY TAKIUE	HDOT	808-933-8844	harry.takiue@hawaii.gov
WILLIAM SAUBORN	WAIMEA PRESERVE	808-895-1182	william@wca.com
Margaret Wilu	M.W.I.L.U.	808-854-6391	margaret@mwilu.com

WAIMEA REGIONAL SAFETY STUDY



SIGN-IN SHEET

Thursday, July 27, 2023 @ 4:30 PM

Waimea Elementary School Cafeteria | 67-1225 Hawai'i Belt Rd., Waimea, Hawaii 96743

NAME	ORGANIZATION	PHONE	EMAIL
Karen McCullough		885-4597	4 Kootsie@gmail.com
Tim McCullough		21	4 TR Farm@gmail.com
David & Terri Greenwell		885-8038	tgreenwell@hawaii.rr.com
James Houtace	SUTX + WCA	464-2570	jameshoutace@gmail.com
Alex Swiderski		825-1475	swiderski.alex@gmail.com
Steve Kittell		847-4441	SKITTELL@aol.com
KENDRA MADRAGA	HIPHI	808-929-8100	kealoha@hiphi.org
ROBERT MCKENDRY	PARKER SCHOOL	808-825-6803	ruckendry@parkerschoolhawaii.org
SAN RYARACKI	Self resident	808-938-0503	ryaracki@hawaii.com
David Tarnas	State House	808-987-5810	reptarnas@capitol.hawaii.gov
SUNNER MENCH	SKTSC	808-958-2954	SUNNER@HARBORCAFETERIA.BIZ
M Kapuniai Kanani	IN HHA am	976 047	
Trey Familiar	farm & ranch	960-3229	KALIKO 96743@gmail.com
Beth A Smith	SKCDRAC am	896-7500	vaswaikebe@aol.com
Jonathan Miskew	PHS	808-410-1871	mit.j@pri-hi.com
Sandy Edrie	?	937 7181	edrie59@gmail.com